

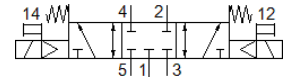
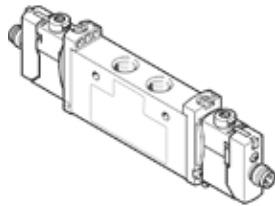
solenoid valve

VUVG-L14-P53C-T-G18-1R8L

Part number: 574231

★ Core product range

FESTO



Data sheet

Feature	Value
Valve function	5/3 closed
Type of actuation	electrical
Valve size	14 mm
Standard nominal flow rate	620 ... 650 l/min
Operating pressure	3 ... 8 bar
Design structure	Piston slide
Type of reset	mechanical spring
Authorisation	RCM Mark c CSA us (OL) c UL us - Recognized (OL)
Protection class	IP65 with plug socket
Nominal size	5.6 mm
Exhaust-air function	throttleable
Sealing principle	soft
Assembly position	Any
Manual override	detenting Pushing Covered
Type of piloting	Piloted
Pilot air supply	Internal
Overlap	Positive overlap
Pilot pressure	3 ... 8 bar
Suitability for vacuum	No
Switching time off	40 ms
Switching time on	12 ms
Switching time reversal	20 ms
Duty cycle	100 %
Max. positive test pulse with logic 0	700 µs
Max. negative test pulse with logic 1	900 µs
Characteristic coil data	24 V DC: 1 W
Permissible voltage fluctuation	+/- 10 %
Operating medium	Compressed air in accordance with ISO8573-1:2010 [7:4:4]
Note on operating and pilot medium	Lubricated operation possible (subsequently required for further operation)
Vibration resistance	Transport application test at severity level 2 in accordance with FN 942017-4 and EN 60068-2-6
Restriction ambient and medium temperature	-5 - 50 °C Without holding current reduction
Shock resistance	Shock test with severity level 2 in accordance with FN 942017-5 and EN 60068-2-27
Corrosion resistance classification CRC	2 - Moderate corrosion stress
Medium temperature	-5 ... 60 °C
Ambient temperature	-5 ... 60 °C
Product weight	89 g
Electrical connection	Via electrical connection plate

Feature	Value
Mounting type	Optional on manifold rail with through hole
Pneumatic connection, port 1	G1/8
Pneumatic connection, port 2	G1/8
Pneumatic connection, port 3	G1/8
Pneumatic connection, port 4	G1/8
Pneumatic connection, port 5	G1/8
Materials note	Conforms to RoHS
Material seals	HNBR NBR
Material housing	Wrought Aluminium alloy